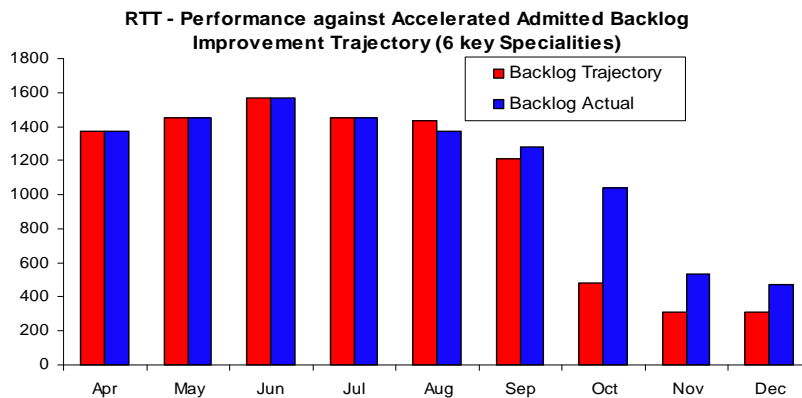


Briefing for the Health Overview and Scrutiny Panel – 2 February 2012  
Update on the Referral Time to Treat (RTT) at Portsmouth Hospitals NHS Trust

At the end of December 2011 the 18-week admitted backlog was 545. For the end of January 2012, the Trust is forecasting an admitted backlog position of 480 (subject to all treatments going ahead as planned)



The Trust has made good progress in reducing the admitted backlog size and this remains one of the smallest backlogs of *all* Trusts in South Central Strategic Health Authority region.

As the backlog has reduced, and in line with our plan, the booking of patients against the 90% standard has started to improve, and is currently on track to achieve this standard for the week commencing 30<sup>th</sup> January.

Cherry West  
Chief Operating Officer  
20 January 2012

